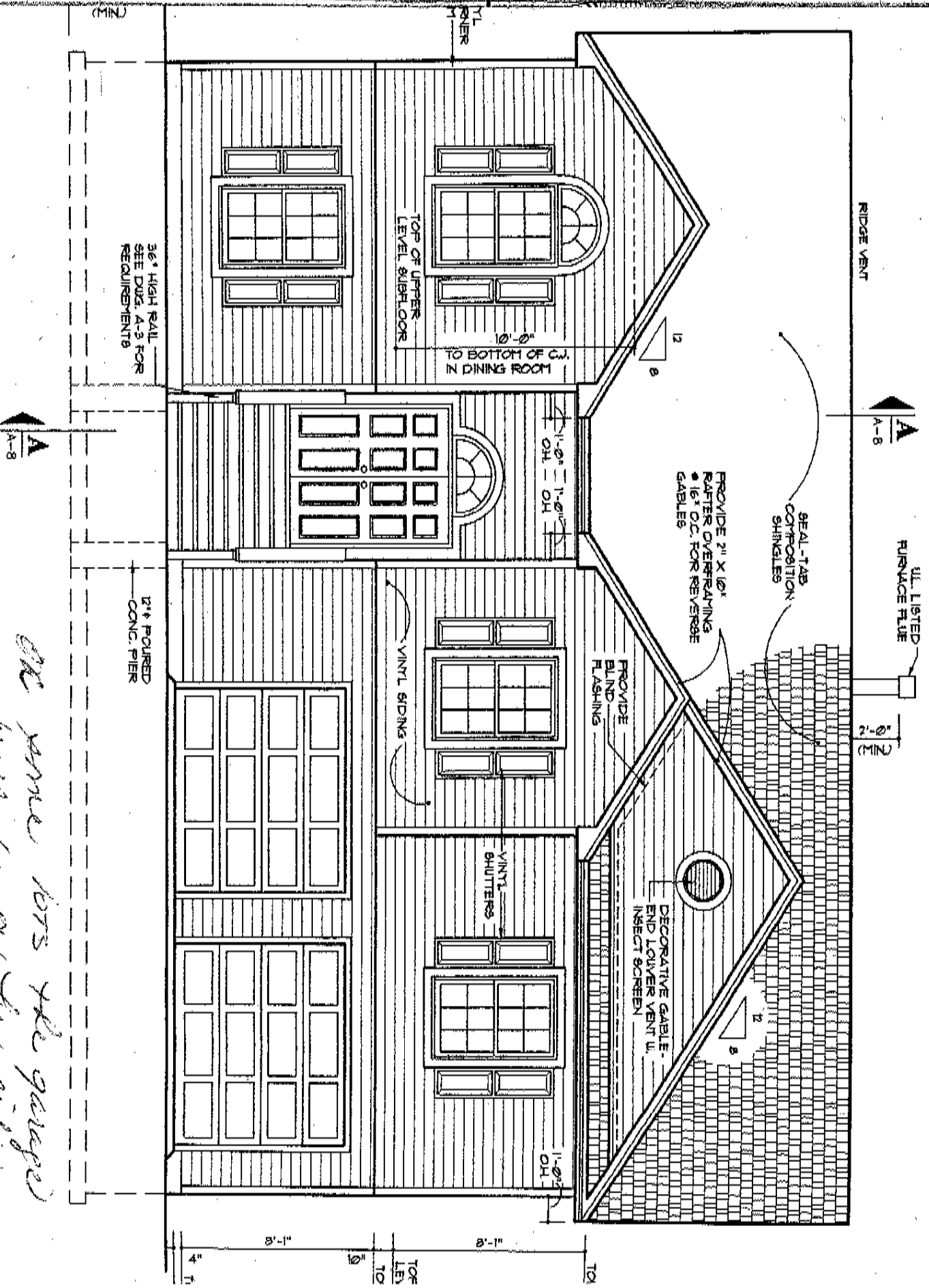


FRONT ELEVATION

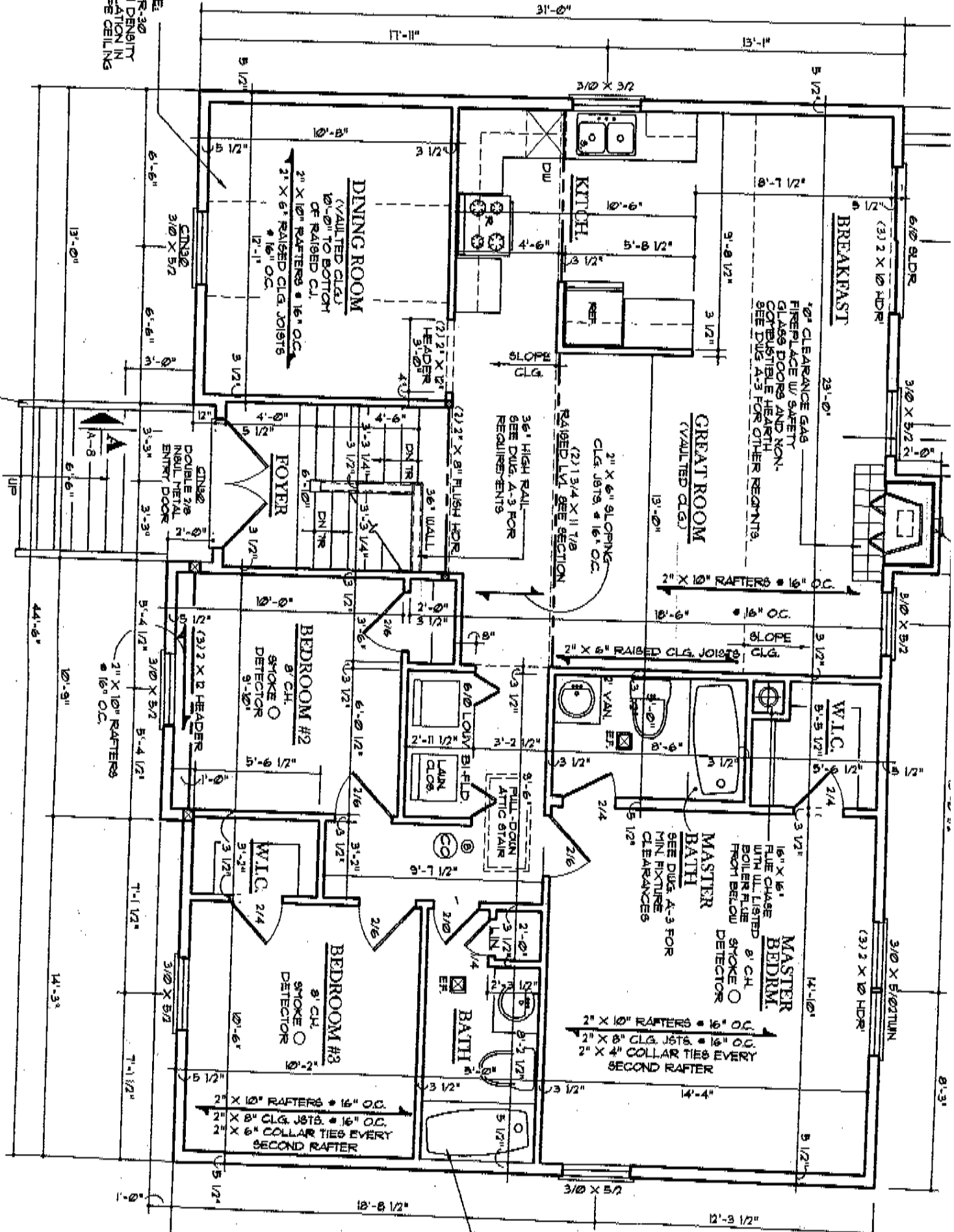


we want to see the garage will be on the side

SCALE: 1/4

NOTE:
USE R-30
HIGH DENSITY
INSULATION IN
SLOPE CEILING

36" HIGH RAIL
SEE DUG. A-3 FOR
REQUIREMENTS



DINING ROOM
(VAULTED CLG.)
10'-0" TO BOTTOM
OF RAISED C.J.
2" X 10" RAFTERS • 16" O.C.
12'-11"

KITCH.

BREAKFAST

4'0" CLEARANCE GAS
FIREPLACE W/ SAFETY
GLASS DOORS AND NON-
COMBUSTIBLE HEARTH.
SEE DUG. A-3 FOR OTHER REQNTS.

GREAT ROOM
(VAULTED CLG.)

2" X 6" SLOPING
CLG. JOISTS • 16" O.C.
(2) 1/4" X 11" TIS
RAISED LV. SEE SECTION

FOYER

BEDROOM #2
8' CH. ○
SMOKE ○
DETECTOR

BEDROOM #3
8' CH. ○
SMOKE ○
DETECTOR

MASTER BATH

MASTER BEDRM.

2" X 10" RAFTERS • 16" O.C.
2" X 8" CLG. JOISTS • 16" O.C.
2" X 4" COLLAR TIES EVERY
SECOND RAFTER

2" X 10" RAFTERS • 16" O.C.
2" X 8" CLG. JOISTS • 16" O.C.
2" X 4" COLLAR TIES EVERY
SECOND RAFTER

DOUBLE 3/8"
RIBUL METAL
ENTRY DOOR

16" X 16"
FLUE CHASE
WITH UL LISTED
BOILER FLUE
FRONT BELOW
MINI FIXTURE
CLEARANCES

6'0" LOW BIFOLD
LAN. DOOR

FULL-BOUN
ATTIC STAIR

8' CH. ○
SMOKE ○
DETECTOR

BATH

(3) 2 X 10 HDR

3/10 X 5/12 TUN

8'-3"

12'-3 1/2"

10'-8 1/2"

14'-3"

44'-8"

13'-0"

31'-0"

17'-11"

15'-1"

5 1/2"

5 1/2"

5 1/2"

5 1/2"

5 1/2"

5 1/2"

5 1/2"

5 1/2"

5 1/2"

5 1/2"

6'0" SLDR

(3) 2 X 10 HDR

3/10 X 5/12

3/10 X 5/12

3/10 X 5/12

3/10 X 5/12

3/10 X 5/12

3/10 X 5/12

3/10 X 5/12

23'-0"

13'-0"

13'-0"

13'-0"

13'-0"

13'-0"

13'-0"

13'-0"

13'-0"

13'-0"

10'-6"

4'-6"

3'-6"

3'-6"

3'-6"

3'-6"

3'-6"

3'-6"

3'-6"

3'-0"

3'-0"

3'-0"

3'-0"

3'-0"

3'-0"

3'-0"

2'-0"

2'-0"

2'-0"

2'-0"

2'-0"

2'-0"

2'-0"

2'-0"

2'-0"

36" HIGH RAIL
SEE DUG. A-3 FOR
REQUIREMENTS

36" HIGH RAIL
SEE DUG. A-3 FOR
REQUIREMENTS

36" HIGH RAIL
SEE DUG. A-3 FOR
REQUIREMENTS

36" HIGH RAIL
SEE DUG. A-3 FOR
REQUIREMENTS

36" HIGH RAIL
SEE DUG. A-3 FOR
REQUIREMENTS

36" HIGH RAIL
SEE DUG. A-3 FOR
REQUIREMENTS

36" HIGH RAIL
SEE DUG. A-3 FOR
REQUIREMENTS

36" HIGH RAIL
SEE DUG. A-3 FOR
REQUIREMENTS

36" HIGH RAIL
SEE DUG. A-3 FOR
REQUIREMENTS

3'-0"

3'-0"

3'-0"

3'-0"

3'-0"

3'-0"

3'-0"

2'-0"

2'-0"

2'-0"

2'-0"

2'-0"

2'-0"

2'-0"

2'-0"

2'-0"

36" HIGH RAIL
SEE DUG. A-3 FOR
REQUIREMENTS

36" HIGH RAIL
SEE DUG. A-3 FOR
REQUIREMENTS

36" HIGH RAIL
SEE DUG. A-3 FOR
REQUIREMENTS

36" HIGH RAIL
SEE DUG. A-3 FOR
REQUIREMENTS

36" HIGH RAIL
SEE DUG. A-3 FOR
REQUIREMENTS

36" HIGH RAIL
SEE DUG. A-3 FOR
REQUIREMENTS

36" HIGH RAIL
SEE DUG. A-3 FOR
REQUIREMENTS

36" HIGH RAIL
SEE DUG. A-3 FOR
REQUIREMENTS

36" HIGH RAIL
SEE DUG. A-3 FOR
REQUIREMENTS

3'-0"

3'-0"

3'-0"

3'-0"

3'-0"

3'-0"

3'-0"

2'-0"

2'-0"

2'-0"

2'-0"

2'-0"

2'-0"

2'-0"

2'-0"

2'-0"

36" HIGH RAIL
SEE DUG. A-3 FOR
REQUIREMENTS

36" HIGH RAIL
SEE DUG. A-3 FOR
REQUIREMENTS

36" HIGH RAIL
SEE DUG. A-3 FOR
REQUIREMENTS

36" HIGH RAIL
SEE DUG. A-3 FOR
REQUIREMENTS

36" HIGH RAIL
SEE DUG. A-3 FOR
REQUIREMENTS

36" HIGH RAIL
SEE DUG. A-3 FOR
REQUIREMENTS

36" HIGH RAIL
SEE DUG. A-3 FOR
REQUIREMENTS

36" HIGH RAIL
SEE DUG. A-3 FOR
REQUIREMENTS

36" HIGH RAIL
SEE DUG. A-3 FOR
REQUIREMENTS

3'-0"

3'-0"

3'-0"

3'-0"

3'-0"

3'-0"

3'-0"

2'-0"

2'-0"

2'-0"

2'-0"

2'-0"

2'-0"

2'-0"

2'-0"

2'-0"

36" HIGH RAIL
SEE DUG. A-3 FOR
REQUIREMENTS

36" HIGH RAIL
SEE DUG. A-3 FOR
REQUIREMENTS

36" HIGH RAIL
SEE DUG. A-3 FOR
REQUIREMENTS

36" HIGH RAIL
SEE DUG. A-3 FOR
REQUIREMENTS

36" HIGH RAIL
SEE DUG. A-3 FOR
REQUIREMENTS

36" HIGH RAIL
SEE DUG. A-3 FOR
REQUIREMENTS

36" HIGH RAIL
SEE DUG. A-3 FOR
REQUIREMENTS

36" HIGH RAIL
SEE DUG. A-3 FOR
REQUIREMENTS

36" HIGH RAIL
SEE DUG. A-3 FOR
REQUIREMENTS

3'-0"

3'-0"

3'-0"

3'-0"

3'-0"

3'-0"

3'-0"

2'-0"

2'-0"

2'-0"

2'-0"

2'-0"

2'-0"

2'-0"

2'-0"

2'-0"

36" HIGH RAIL
SEE DUG. A-3 FOR
REQUIREMENTS

36" HIGH RAIL
SEE DUG. A-3 FOR
REQUIREMENTS

36" HIGH RAIL
SEE DUG. A-3 FOR
REQUIREMENTS

36" HIGH RAIL
SEE DUG. A-3 FOR
REQUIREMENTS

36" HIGH RAIL
SEE DUG. A-3 FOR
REQUIREMENTS

36" HIGH RAIL
SEE DUG. A-3 FOR
REQUIREMENTS

36" HIGH RAIL
SEE DUG. A-3 FOR
REQUIREMENTS

36" HIGH RAIL
SEE DUG. A-3 FOR
REQUIREMENTS

36" HIGH RAIL
SEE DUG. A-3 FOR
REQUIREMENTS

3'-0"

3'-0"

3'-0"

3'-0"

3'-0"

3'-0"

3'-0"

2'-0"

2'-0"

2'-0"

2'-0"

2'-0"

2'-0"

2'-0"

2'-0"

2'-0"

36" HIGH RAIL
SEE DUG. A-3 FOR
REQUIREMENTS

36" HIGH RAIL
SEE DUG. A-3 FOR
REQUIREMENTS

36" HIGH RAIL
SEE DUG. A-3 FOR
REQUIREMENTS

36" HIGH RAIL
SEE DUG. A-3 FOR
REQUIREMENTS

36" HIGH RAIL
SEE DUG. A-3 FOR
REQUIREMENTS

36" HIGH RAIL
SEE DUG. A-3 FOR
REQUIREMENTS

36" HIGH RAIL
SEE DUG. A-3 FOR
REQUIREMENTS

36" HIGH RAIL
SEE DUG. A-3 FOR
REQUIREMENTS

36" HIGH RAIL
SEE DUG. A-3 FOR
REQUIREMENTS

3'-0"

3'-0"

3'-0"

3'-0"

3'-0"

3'-0"

3'-0"

2'-0"

2'-0"

2'-0"

2'-0"

2'-0"

2'-0"

2'-0"

2'-0"

2'-0"

36" HIGH RAIL
SEE DUG. A-3 FOR
REQUIREMENTS

36" HIGH RAIL
SEE DUG. A-3 FOR
REQUIREMENTS

36" HIGH RAIL
SEE DUG. A-3 FOR
REQUIREMENTS

36" HIGH RAIL
SEE DUG. A-3 FOR
REQUIREMENTS

36" HIGH RAIL
SEE DUG. A-3 FOR
REQUIREMENTS

36" HIGH RAIL
SEE DUG. A-3 FOR
REQUIREMENTS

36" HIGH RAIL
SEE DUG. A-3 FOR
REQUIREMENTS

36" HIGH RAIL
SEE DUG. A-3 FOR
REQUIREMENTS

36" HIGH RAIL
SEE DUG. A-3 FOR
REQUIREMENTS

3'-0"

3'-0"

3'-0"

3'-0"

3'-0"

3'-0"

3'-0"

2'-0"

2'-0"

2'-0"

2'-0"

2'-0"

2'-0"

2'-0"

2'-0"

