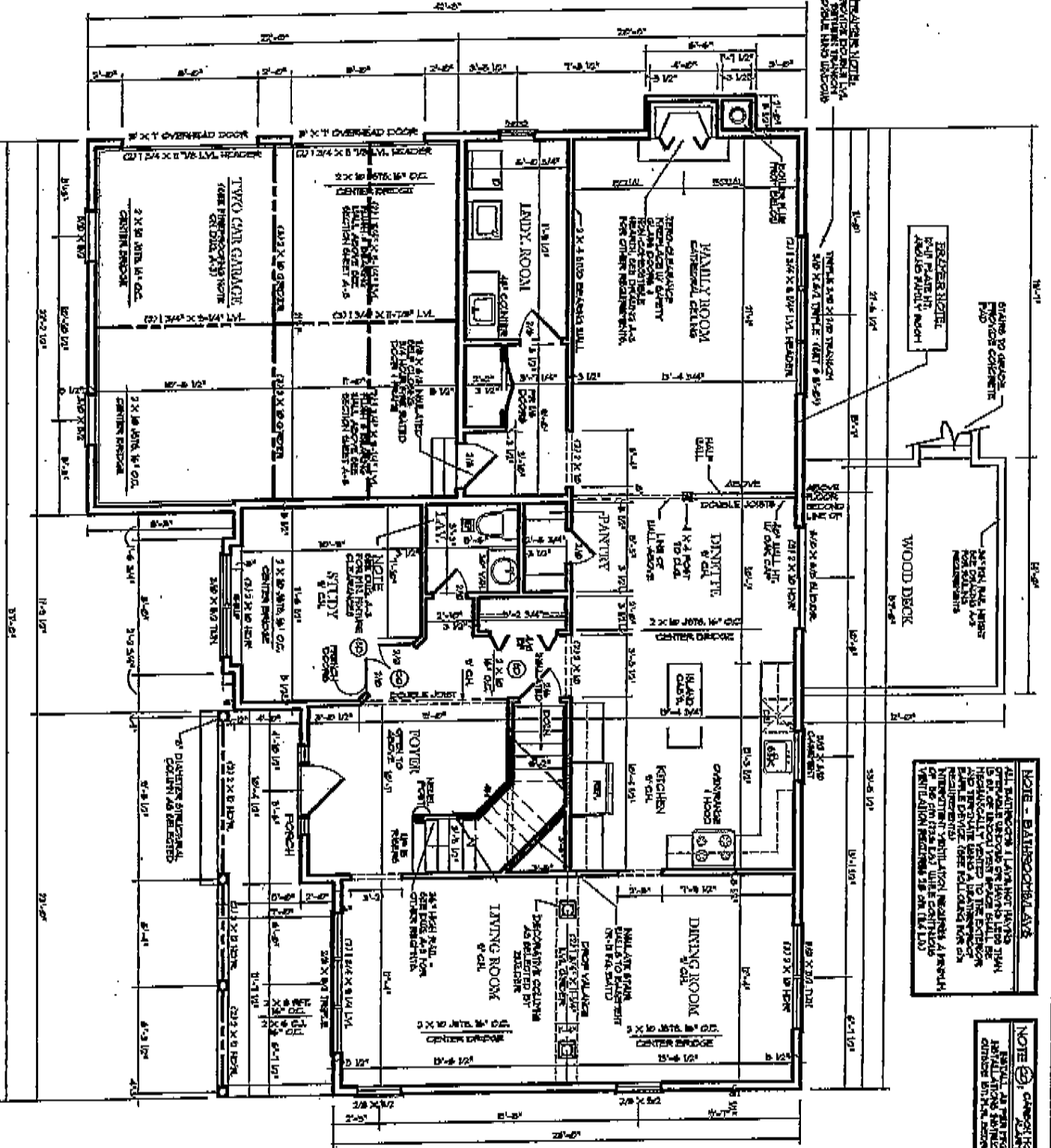


# FIRST FLOOR PLAN

NOTE: UNDOOR AREA, EGRESS ARE BLANKED DURING CAPITAL GAINS PERIODS UNTIL ALL BLANK AND INSTALL PER CONSTRUCTION SPECIFICATIONS



**NOTE - BATHROOMS**  
 ALL BATHROOMS IN LIVING UNIT HAVE 6" OF BATHROOM FLOORING UNDER THE BATHROOMS. THE BATHROOMS ARE MEANT TO BE REMOVED AND A BATHROOM IS TO BE INSTALLED IN THE BATHROOMS. SEE CALLING FOR ON VENTILATION REQUIREMENTS IN THE PLAN.

**NOTE - GARAGE**  
 GARAGE IS TO BE REMOVED AND A GARAGE IS TO BE INSTALLED IN THE GARAGE. SEE CALLING FOR ON VENTILATION REQUIREMENTS IN THE PLAN.

**NOTE - ENTRY**  
 ENTRY IS TO BE REMOVED AND A ENTRY IS TO BE INSTALLED IN THE ENTRY. SEE CALLING FOR ON VENTILATION REQUIREMENTS IN THE PLAN.

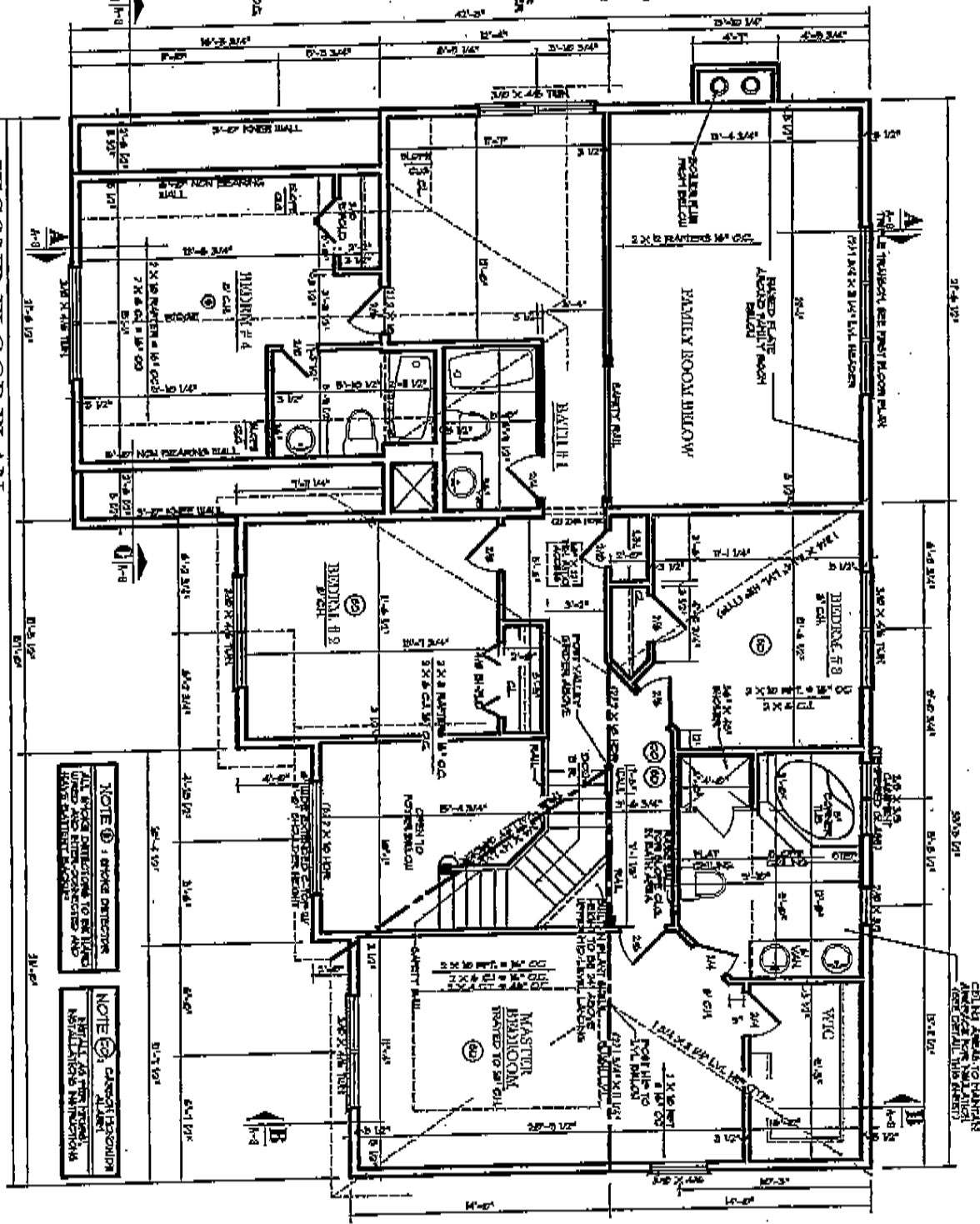
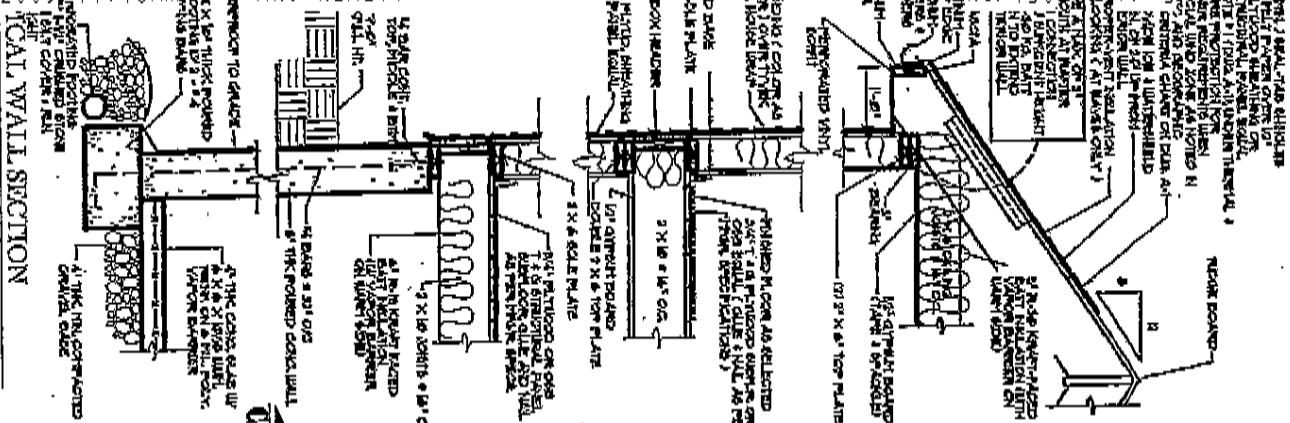
**REVISIONS**

| NO. | DATE     | REVISIONS       |
|-----|----------|-----------------|
| 1   | 11/11/08 | ISSUED PERIODIC |

**DRAGO Architects**  
 Design & Construction  
 201 WIND STREET, SUITE J  
 MORTONDALE, ILL. 60439  
 (708) 457-9702

**MAKAWILAND DRY, LLC**  
 201 WIND STREET, SUITE J  
 MORTONDALE, ILL. 60439  
 (708) 457-9702





**SECOND FLOOR PLAN**  
 NOTE: WINDOW SIZES & SPACING ARE BASED ON LOCAL BUILDING CODES. SEE GENERAL NOTES FOR DETAILS.

**NOTE - BATHROOMS AND BEDS**  
 ALL BATHROOMS & BEDS HAVE 1/2" X 4" TO 1/2" X 4" TUBS. ALL BATHROOMS & BEDS HAVE 1/2" X 4" TUBS. ALL BATHROOMS & BEDS HAVE 1/2" X 4" TUBS. ALL BATHROOMS & BEDS HAVE 1/2" X 4" TUBS.

|              |  |
|--------------|--|
| BLDG         | MILKMAN LAND DEV.  |
| MOBL         | THE CANTRELL III   |
| USE LOCATION | 700 UNIVERSITY BLVD. SUITE 100<br>BALTIMORE COUNTY, MD 21046 |

**Drago Architects**  
 Design & Planning Consultants  
 200 WARD STREET SUITE 1  
 MONTROSE, NY 10889  
 914-457-0752

|            |               |
|------------|---------------|
| JOB #      | 278-02        |
| DATE       | REVISIONS NOT |
| SCALE      | AS SHOWN      |
| DRAWN BY   | DMAN          |
| CHECKED BY |               |
| SHEET NO.  |               |

**AVAILABLE NOTES**  
 FOR GENERAL NOTES  
 SEE GENERAL NOTES  
 (SEE GENERAL NOTES)