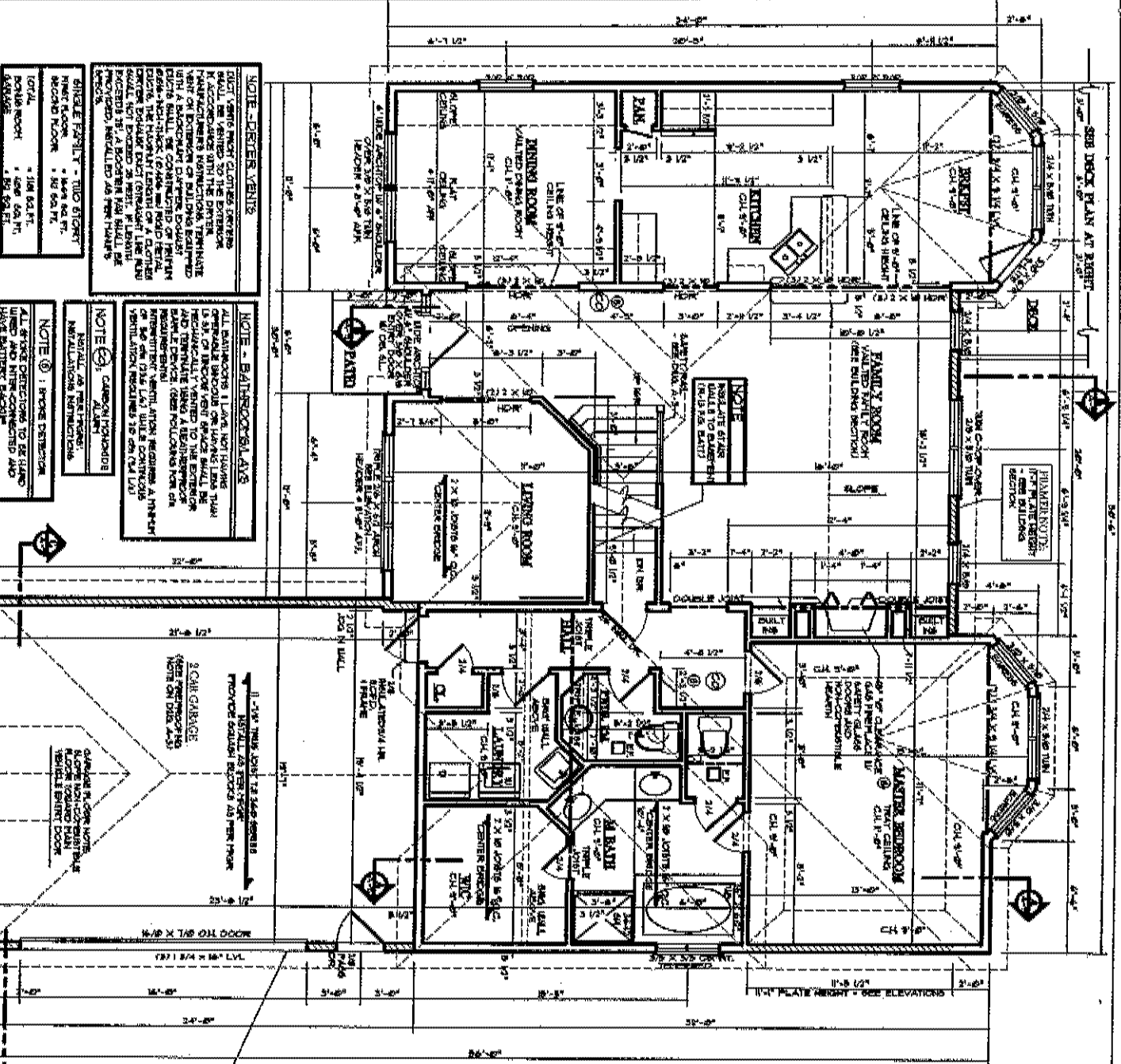




**FIRST FLOOR PLAN**

ALL WINDOW SIZES AND EIGHTHS ARE BASED UPON SHOWN ON SPCL. DOOR SCHEDULES, HORIZONTAL AND VERTICAL WINDOW SIZES ARE THE SAME - USE ARCHITECT CLERKING BOARD WHEN AT BUSINESS WINDOWS



**NOTE - DECK VENTS**

THIS DECK VENT SYSTEM SHALL BE VERIFIED TO THE DECKING MANUFACTURER'S RECOMMENDATIONS. THE DECKING MANUFACTURER'S RECOMMENDATIONS SHALL BE COMPLETED ON THE DECKING MANUFACTURER'S RECOMMENDATIONS. THE DECKING MANUFACTURER'S RECOMMENDATIONS SHALL BE COMPLETED ON THE DECKING MANUFACTURER'S RECOMMENDATIONS. THE DECKING MANUFACTURER'S RECOMMENDATIONS SHALL BE COMPLETED ON THE DECKING MANUFACTURER'S RECOMMENDATIONS.

**NOTE - BALANCE**

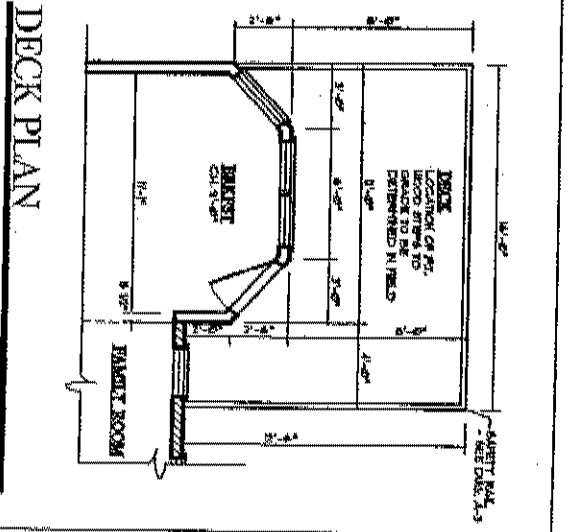
ALL BALANCE ROOMS SHALL BE VERIFIED TO THE BALANCE MANUFACTURER'S RECOMMENDATIONS. THE BALANCE MANUFACTURER'S RECOMMENDATIONS SHALL BE COMPLETED ON THE BALANCE MANUFACTURER'S RECOMMENDATIONS. THE BALANCE MANUFACTURER'S RECOMMENDATIONS SHALL BE COMPLETED ON THE BALANCE MANUFACTURER'S RECOMMENDATIONS.

**NOTE - GARAGE**

THE GARAGE SHALL BE VERIFIED TO THE GARAGE MANUFACTURER'S RECOMMENDATIONS. THE GARAGE MANUFACTURER'S RECOMMENDATIONS SHALL BE COMPLETED ON THE GARAGE MANUFACTURER'S RECOMMENDATIONS. THE GARAGE MANUFACTURER'S RECOMMENDATIONS SHALL BE COMPLETED ON THE GARAGE MANUFACTURER'S RECOMMENDATIONS.

**NOTE - HALL**

THE HALL SHALL BE VERIFIED TO THE HALL MANUFACTURER'S RECOMMENDATIONS. THE HALL MANUFACTURER'S RECOMMENDATIONS SHALL BE COMPLETED ON THE HALL MANUFACTURER'S RECOMMENDATIONS. THE HALL MANUFACTURER'S RECOMMENDATIONS SHALL BE COMPLETED ON THE HALL MANUFACTURER'S RECOMMENDATIONS.



**DECK PLAN**

SCALE 1/4" = 1'-0"

**DECK NOTE:**

THE DECK SHALL BE VERIFIED TO THE DECK MANUFACTURER'S RECOMMENDATIONS. THE DECK MANUFACTURER'S RECOMMENDATIONS SHALL BE COMPLETED ON THE DECK MANUFACTURER'S RECOMMENDATIONS. THE DECK MANUFACTURER'S RECOMMENDATIONS SHALL BE COMPLETED ON THE DECK MANUFACTURER'S RECOMMENDATIONS.

**Drago Architects**  
Design & Planning Consultants

301 WARD STREET, SUITE J  
MORRISTOWN, NJ 07960  
(908) 687-9333

NEW RESIDENTIAL PROJECT  
RESIDENTIAL ARCHITECTURE  
ARCHITECTS

LOT 9.5, 10.5, 11.5, 12.5, 13.5, 14.5, 15.5, 16.5, 17.5, 18.5, 19.5, 20.5, 21.5, 22.5, 23.5, 24.5, 25.5, 26.5, 27.5, 28.5, 29.5, 30.5, 31.5, 32.5, 33.5, 34.5, 35.5, 36.5, 37.5, 38.5, 39.5, 40.5, 41.5, 42.5, 43.5, 44.5, 45.5, 46.5, 47.5, 48.5, 49.5, 50.5, 51.5, 52.5, 53.5, 54.5, 55.5, 56.5, 57.5, 58.5, 59.5, 60.5, 61.5, 62.5, 63.5, 64.5, 65.5, 66.5, 67.5, 68.5, 69.5, 70.5, 71.5, 72.5, 73.5, 74.5, 75.5, 76.5, 77.5, 78.5, 79.5, 80.5, 81.5, 82.5, 83.5, 84.5, 85.5, 86.5, 87.5, 88.5, 89.5, 90.5, 91.5, 92.5, 93.5, 94.5, 95.5, 96.5, 97.5, 98.5, 99.5, 100.5

NO.	DATE	BY
101	09/27/2008	DRG
102	09/27/2008	DRG
103	09/27/2008	DRG
104	09/27/2008	DRG

SHEET NO. **A-13** OF 11



