

**SPECIAL WIND ZONE NOTE**  
 SEE NOTE ON DRAWING SHEET THERMAL I  
 FOR MORE INFORMATION REGARDING  
 VENTILATION REQUIREMENTS (WHEN  
 APPLICABLE) AND FINISH SYSTEMS (WHEN  
 APPLICABLE). WIND ZONE AS NOTED IN  
 CLIMATE AND GEOGRAPHIC  
 DESIGN CRITERIA CHART.

**EXTERIOR INSULATION & FINISH SYSTEM**  
 THIS SHALL BE EXTENDED, GROOVED BACK,  
 AND COVERED WITH INSULATION, EPS SYSTEM WITH VENTING ON BASE  
 OR OTHER APPROVED SYSTEM.

**FRONT ELEVATION**

SCALE: 1/4" = 1'-0"



**NOTE - DRYER VENTS**

DUCT VENTS FROM CLOSET DRYERS SHALL BE VENTED TO THE EXTERIOR IN ACCORDANCE WITH THE MANUFACTURER'S INSTRUCTIONS. ALL DUCTS SHALL BE INSTALLED WITH A 1/4" CLEARANCE TO THE EXTERIOR. EXHAUST FANS SHALL BE CONSTRUCTED OF FRUIT-BALANCED MATERIALS AND SHALL BE INSTALLED WITH A 1/4" CLEARANCE TO THE EXTERIOR. EXHAUST FANS SHALL BE PROVIDED WITH A 1/4" CLEARANCE TO THE EXTERIOR. EXHAUST FANS SHALL BE PROVIDED WITH A 1/4" CLEARANCE TO THE EXTERIOR. EXHAUST FANS SHALL BE PROVIDED WITH A 1/4" CLEARANCE TO THE EXTERIOR.

**NOTE - BATHROOMS**

ALL BATHROOMS SHALL BE PROVIDED WITH A MECHANICAL EXHAUST FAN. THE FAN SHALL BE INSTALLED WITH A 1/4" CLEARANCE TO THE EXTERIOR. EXHAUST FANS SHALL BE PROVIDED WITH A 1/4" CLEARANCE TO THE EXTERIOR. EXHAUST FANS SHALL BE PROVIDED WITH A 1/4" CLEARANCE TO THE EXTERIOR. EXHAUST FANS SHALL BE PROVIDED WITH A 1/4" CLEARANCE TO THE EXTERIOR.

**NOTE - CARBON MONOXIDE**

INSTALL AS PER FIGURE 1001.1 OF THE NATIONAL FIRE PROTECTION ASSOCIATION (NFPA) 720, NATIONAL FIRE ALARM AND SIGNAL CODE, 2005 EDITION.

**NOTE - SMOKE DETECTOR**

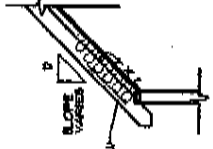
ALL SMOKE DETECTORS TO BE HARD WIRE AND INTERCONNECTED AND HAVE BATTERY BACKUP.

**Drago Architects**  
Design & Planning Consultants

201 WARD STREET, SUITE J  
MONTGOMERY, NY, 12549  
(518) 487-3382

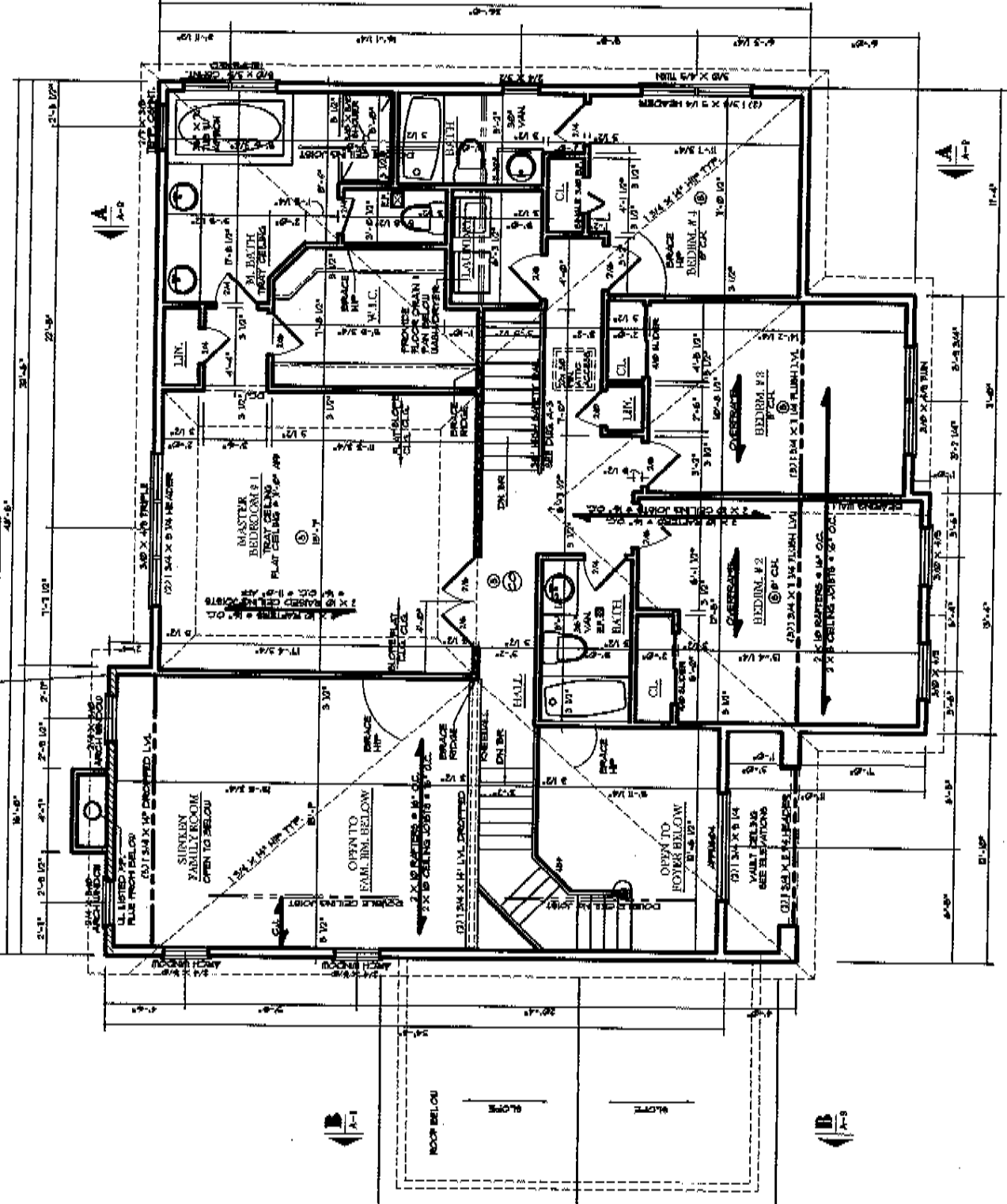
BLDG. NO.:	NAKAN LAND DEVELOPMENT
MODEL:	
<b>THE EVERTON</b>	
JOB LOCATION:	SUBDIVISION OF ORCHARD HILL #4916 - SECTION II
JOB NO.:	2008-01
DATE:	OCTOBER 2008
SCALE:	NOTED
DATE BY:	REV/P
DATE BY:	REV/P

SHEET NO. 9 OF 9



RIP OUT RAFTERS IN 2 X 4 TO HANGTAK AREA - SLOPED AREA ABOVE WALL

**DRAMAIR NOTE:**  
LOWER UPPER PLATE BY 2" SEE REAR ELEVATION



SCALE 1/4" = 1'-0"

**SECOND FLOOR PLAN**

ALL WINDOWS AND EGRESS ARE BASED UPON USING ANDERSEN 2000 SERIES VINYL DOUBLE HUNG - INSTALL AND FLASH AS PER MFG.

**FINISHER NOTE:**  
SEE FLOOR PLAN AND SPECIFICATIONS FOR WINDOW SIZES AND FINISHES.  
SECOND FLOOR - 3'-0" AFF.

